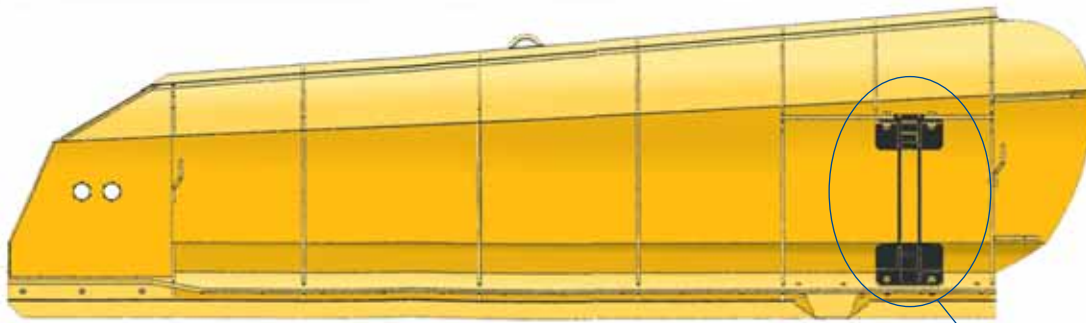


WING PLOW

LAROCHELLE

wing plows are also available for the following applications:

- Underbody grader/scrapper
- Front end loader



Push arm adaptor

options

- Panel type moldboard:
 - Adds structural strength to plow
 - Provides breaking action to the snow load
 - Eases snow ejection
- 6" x 4" x 5/8" blade support angle reinforced by 3/8" thick triangular gussets
- Pivoting bolt: 1 1/2", grade 8
- Lifting ring
- Multi-positions push arms adaptor:
 - helps improve wing push arms working angle
- 3/16" thick (7 ga) moldboard
- Polymer moldboard liner
- Carbide blade and shoes
- Curb shoe
- Additional wear shoe

MODEL	MOLDBOARD THICKNESS	OVERALL LENGTH	HEIGHT intake	HEIGHT discharge	CUTTING EDGE	APPROX. WEIGHT
10W108R	10 ga	10'- 0" (120")	31"	39"	1/2" x 8" x 108"	675 lbs
11W120R	10 ga	11'- 0" (132")	31"	40"	1/2" x 8" x 120"	725 lbs
12W132R	10 ga	12'- 0" (144")	31"	41"	1/2" x 8" x 132"	825 lbs
13W144R	10 ga	13'- 0" (156")	32"	42 1/2"	1/2" x 8" x 144"	950 lbs

LAROCHELLE products are warranted under published warranty. The company reserves the right under its product improvement policy to change construction or design of its product without notice.

Larochelle Equipment Inc. quality management SYSTEM IS ISO 9001: 2000 CERTIFIED.



Since 1956
 250, 2nd avenue, Quebec, P.Q., Canada, G1L 3A7
 Tel. : (418) 522-8222 • Fax : (418) 522-3115
 E-mail : phil@larochelle.ca • Internet : www.larochelle.ca

DISTRIBUTOR